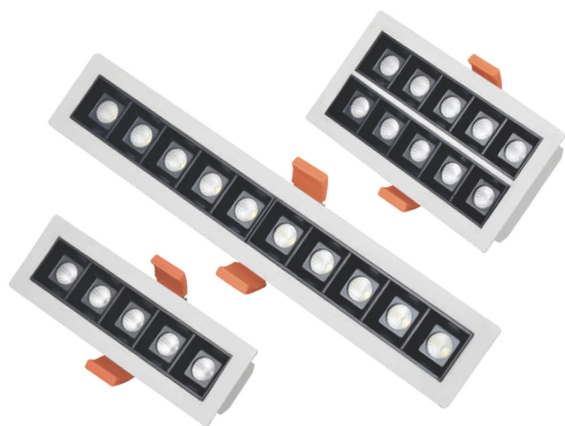




**LED WALL WASHER
LIGHTS**



Bling LED Wall Washer Lights

General Specifications

Mounting Type	Recessed
Limited Warranty	2 Years
Beam Angle	60 Degrees

Fixture Specifications

Housing Material	Extruded Aluminium
Diffuser Material	Polycarbonate
Surface Finish	Powder Coated
Driver Type	Integrated

Performance Specifications

Colour rendering index (CRI)	80+
Rated LED Burning Hours	50,000 Hrs
Start up time	Instant
Efficacy (Lm / W)	100+

Electrical Specifications

Input Voltage (VAC)	150 - 270 VAC
Total Harmonic Distorsion	Upto 10%
Input Frequency	50 Hz
Power Factor	0.95 +
Driver Efficiency	Upto 80%

Safety Features

Short Circuit Protection	Yes
Open Circuit Protection	Yes

Environmental Specification

Working Temperature	0 to 40 C
Working Humidity	Upto 80%
Vibrations	1G

Smart Features

Lux Sensing	Optional
Motion Sensing	Optional

HOW TO ORDER

HUB - BLING -

3W

WH

Input Power

1

3W : 3W
5W : 5W
10W : 10W
20W : 20W
30W : 30W

Housing Colour

2

WH : White
BL : Black

How to order example

To order a Hublit products, you can choose an Input Power from the values above from the minimum value to the maximum value, in this case we use smallest value. Similarly you can choose from the Colour Temperature (CCT) options from 2700K to 6500K and so on to generate the model number; Please find the example of a filled model number for this product.

Example : HUB - BLING - 3W - WH



Crucia LED Wall Washer Lights

General Specifications

Mounting Type	Surface
Limited Warranty	2 Years
Lighting Source Type	SMD LED

Fixture Specifications

Housing Material	Extruded Aluminium
Diffuser Material	Polycarbonate
Surface Finish	Anodised
Driver Type	External

Performance Specifications

Colour rendering index (CRI)	80+
Start up time	Instant
Efficacy (Lm / W)	100+

Electrical Specifications

Input Voltage (VAC)	150 - 270 VAC
Total Harmonic Distorsion	Upto 10%
Power Factor	0.95 +
Driver Efficiency	Upto 80%

Safety Features

Ingress Protection	IP44
Surge Protection	Upto 2KV
Short Circuit Protection	Yes
Open Circuit Protection	Yes

Environmental Specification

Working Temperature	0 to 40 C
Vibrations	1G

Mechanical Specifications

Luminaire Dimension (L X W X H)	65mm X 26mm
---------------------------------	-------------

HOW TO ORDER

HUB - CRUCIA - 10W/F - GR - 2732K

Input Power	1	Housing Colour	2
2W/F : 2W/F		GR : Grey	
6W/F : 6W/F		WH : White	
10W/F : 10W/F		BL : Black	

Colour Temperature (CCT)	3
2732K : 2700K - 3200K	
4050K : 4000K - 5000K	
6050K : 6000K - 6500K	

How to order example

To order a Hublit products, you can choose an Input Power from the values above from the minimum value to the maximum value, in this case we use smallest value. Similarly you can choose from the Colour Temperature (CCT) options from 2700K to 6500K and so on to generate the model number; Please find the example of a filled model number for this product.

Example : HUB - CRUCIA - 10W/F - GR - 2732K



Fredo LED Wall Washer Lights

General Specifications

Mounting Type	Recessed
Limited Warranty	2 Years

Fixture Specifications

Housing Material	Extruded Aluminium
Diffuser Material	Polycarbonate
Surface Finish	Powder Coated
Driver Type	External

Performance Specifications

Colour rendering index (CRI)	80+
Rated LED Burning Hours	50,000 Hrs
Start up time	Instant
Efficacy (Lm / W)	100+

Electrical Specifications

Input Voltage (VAC)	150 - 270 VAC
Total Harmonic Distorsion	Upto 10%
Input Frequency	50 Hz
Power Factor	0.95 +
Driver Efficiency	Upto 80%

Safety Features

Ingress Protection	IP44
Surge Protection	Upto 2KV
Short Circuit Protection	Yes
Open Circuit Protection	Yes

Packaging Specifications

Luminaries Per Box	1
--------------------	---

Environmental Specification

Working Temperature	0 to 40 C
Working Humidity	upto 90%
Vibrations	1G

Mechanical Specifications

Luminaire Dimension (L X W X H)	95mm X 37mm
---------------------------------	-------------

HOW TO ORDER

HUB - FREDO - 2W/F - WH - 4050K

Input Power	1	Housing Colour	2
2W/F : 2W/F		GR : Grey	
6W/F : 6W/F		WH : White	
		BL : Black	

Colour Temperature (CCT)	3
2732K : 2700K - 3200K	
4050K : 4000K - 5000K	
6050K : 6000K - 6500K	

How to order example

To order a Hublit products, you can choose an Input Power from the values above from the minimum value to the maximum value, in this case we use smallest value. Similarly you can choose from the Colour Temperature (CCT) options from 2700K to 6500K and so on to generate the model number; Please find the example of a filled model number for this product.

Example : HUB - FREDO - 2W/F - WH - 4050K



Giovano LED Wall Washer Lights

General Specifications

Mounting Type	Recessed
Limited Warranty	2 Years
Lighting Source Type	SMD LED

Fixture Specifications

Housing Material	Extruded Aluminium
Diffuser Material	Polycarbonate
Surface Finish	Anodised
Driver Type	External

Performance Specifications

Colour rendering index (CRI)	80+
Start up time	Instant
Efficacy (Lm / W)	100+

Electrical Specifications

Input Voltage (VAC)	150 - 270 VAC
Total Harmonic Distorsion	Upto 10%
Power Factor	0.95 +
Driver Efficiency	Upto 80%

Safety Features

Ingress Protection	IP44
Surge Protection	Upto 2KV
Short Circuit Protection	Yes
Open Circuit Protection	Yes

Environmental Specification

Working Temperature	0 to 40 C
Vibrations	1G

Mechanical Specifications

Luminaire Dimension (L X W X H)	30mm X 18mm
---------------------------------	-------------

HOW TO ORDER

HUB - GIOVANO - 2W/F - WH - 4050K

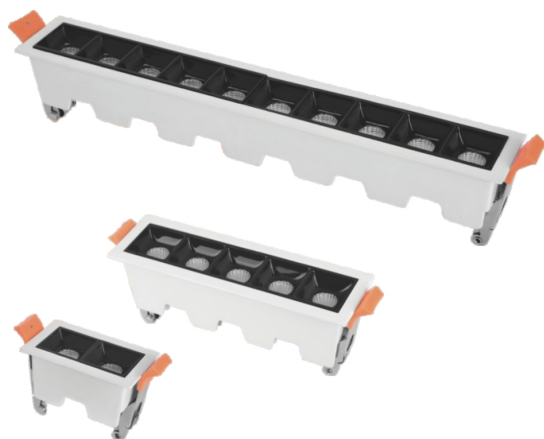
Input Power	1	Housing Colour	2
2W/F : 2W/F		GR : Grey	
6W/F : 6W/F		WH : White	
		BL : Black	

Colour Temperature (CCT)	3
2732K : 2700K - 3200K	
4050K : 4000K - 5000K	
6050K : 6000K - 6500K	

How to order example

To order a Hublit products, you can choose an Input Power from the values above from the minimum value to the maximum value, in this case we use smallest value. Similarly you can choose from the Colour Temperature (CCT) options from 2700K to 6500K and so on to generate the model number; Please find the example of a filled model number for this product.

Example : HUB - GIOVANO - 2W/F - WH - 4050K



Glory LED Wall Washer Lights

General Specifications

Mounting Type	Recessed
Limited Warranty	2 Years
Beam Angle	60 Degrees
Lighting Source Type	COB LED

Fixture Specifications

Housing Material	Die Cast Aluminium
Diffuser Material	Polycarbonate
Surface Finish	Powder Coated
Housing Colour	White
Driver Type	External

Performance Specifications

Colour rendering index (CRI)	80+
Start up time	Instant
Efficacy (Lm / W)	100+

Electrical Specifications

Input Voltage (VAC)	90 - 300 VAC
Total Harmonic Distorsion	Upto 10%
Input Frequency	50 - 60 Hz
Power Factor	0.90 +
Driver Efficiency	Upto 80%

Safety Features

Ingress Protection	IP20
Surge Protection	Upto 2KV
Open Circuit Protection	Yes

Environmental Specification

Working Temperature	0 to 40 C
Vibrations	2G

HOW TO ORDER

HUB - GLORY - 25W - 6050K

Input Power	1	Colour Temperature (CCT)	2
3W :	3W	2732K :	2700K - 3200K
6W :	6W	4050K :	4000K - 5000K
9W :	9W	6050K :	6000K - 6500K
12W :	12W		
25W :	25W		
40W :	40W		

How to order example

To order a Hublit products, you can choose an Input Power from the values above from the minimum value to the maximum value, in this case we use smallest value. Similarly you can choose from the Colour Temperature (CCT) options from 2700K to 6500K and so on to generate the model number; Please find the example of a filled model number for this product.

Example : HUB - GLORY - 25W - 6050K



Mattera LED Wall Washer Lights

Surface

General Specifications

Mounting Type	Surface
Limited Warranty	2 Years
Lighting Source Type	SMD LED

Fixture Specifications

Housing Material	Extruded Aluminium
Diffuser Material	Polycarbonate
Surface Finish	Anodised
Driver Type	External

Performance Specifications

Colour rendering index (CRI)	80+
Start up time	Instant
Efficacy (Lm / W)	100+

Electrical Specifications

Input Voltage (VAC)	150 - 270 VAC
Total Harmonic Distorsion	Upto 10%
Power Factor	0.95 +
Driver Efficiency	Upto 80%

Safety Features

Ingress Protection	IP44
Surge Protection	Upto 2KV
Short Circuit Protection	Yes
Open Circuit Protection	Yes

Environmental Specification

Working Temperature	0 to 40 C
Vibrations	1G

Mechanical Specifications

Luminaire Dimension (L X W X H)	33mm X 57mm
---------------------------------	-------------

HOW TO ORDER

HUB - MATTERA - 2W/F - GR - 4050K

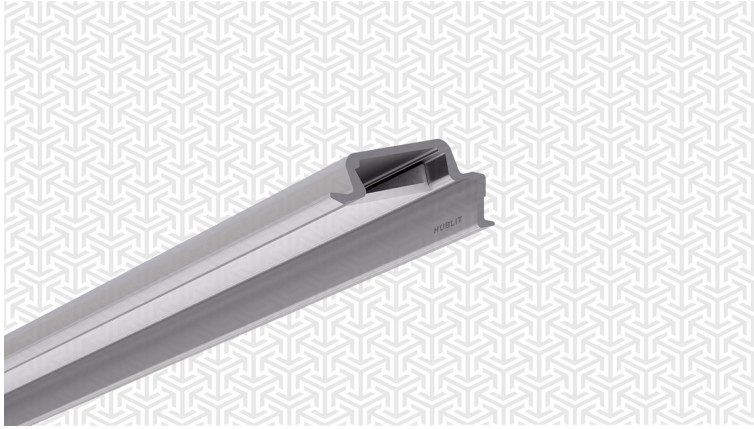
Input Power	1	Housing Colour	2
2W/F : 2W/F		GR : Grey	
6W/F : 6W/F		WH : White	
10W/F : 10W/F		BL : Black	

Colour Temperature (CCT)	3
2732K : 2700K - 3200K	
4050K : 4000K - 5000K	
6050K : 6000K - 6500K	

How to order example

To order a Hublit products, you can choose an Input Power from the values above from the minimum value to the maximum value, in this case we use smallest value. Similarly you can choose from the Colour Temperature (CCT) options from 2700K to 6500K and so on to generate the model number; Please find the example of a filled model number for this product.

Example : HUB - MATTERA - 2W/F - GR - 4050K



Scaden LED Wall Washer Lights

General Specifications

Mounting Type	Recessed
Limited Warranty	2 Years
Lighting Source Type	SMD LED

Fixture Specifications

Housing Material	Extruded Aluminium
Diffuser Material	Polycarbonate
Surface Finish	Anodised
Driver Type	External

Performance Specifications

Colour rendering index (CRI)	80+
Start up time	Instant
Efficacy (Lm / W)	100+

Electrical Specifications

Input Voltage (VAC)	90 - 300 VAC
Total Harmonic Distorsion	Upto 10%
Power Factor	0.95 +
Driver Efficiency	Upto 80%

Safety Features

Ingress Protection	IP44
Surge Protection	Upto 2KV
Short Circuit Protection	Yes
Open Circuit Protection	Yes

Environmental Specification

Working Temperature	0 to 40 C
Vibrations	1G

Mechanical Specifications

Luminaire Dimension (L X W X H)	21.5mmX9.7mm
---------------------------------	--------------

HOW TO ORDER

HUB - SCADEN - 1W/F - GR - 4050K

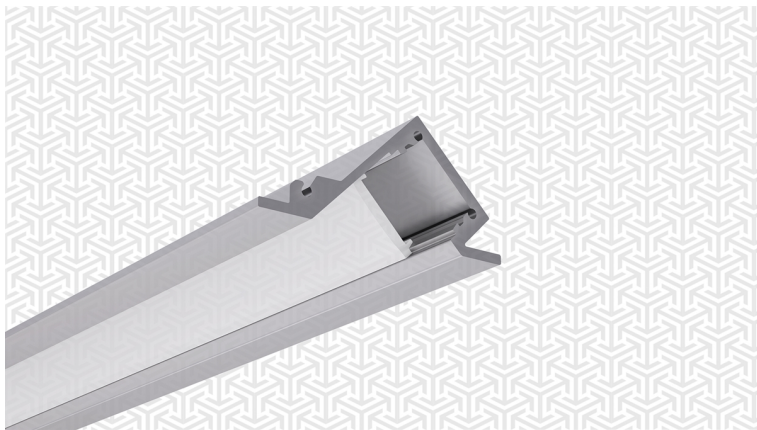
Input Power	1	Housing Colour	2
1W/F : 1W/F		GR : Grey	
3W/F : 3W/F		WH : White	
		BL : Black	

Colour Temperature (CCT)	3
2732K : 2700K - 3200K	
4050K : 4000K - 5000K	
6050K : 6000K - 6500K	

How to order example

To order a Hublit products, you can choose an Input Power from the values above from the minimum value to the maximum value, in this case we use smallest value. Similarly you can choose from the Colour Temperature (CCT) options from 2700K to 6500K and so on to generate the model number; Please find the example of a filled model number for this product.

Example : HUB - SCADEN - 1W/F - GR - 4050K



Trajevo LED Wall Washer Lights

General Specifications

Mounting Type	Surface
Limited Warranty	2 Years
Lighting Source Type	SMD LED

Fixture Specifications

Housing Material	Extruded Aluminium
Diffuser Material	Polycarbonate
Surface Finish	Anodised
Driver Type	External

Performance Specifications

Colour rendering index (CRI)	80+
Start up time	Instant
Efficacy (Lm / W)	100+

Electrical Specifications

Input Voltage (VAC)	150 - 270 VAC
Total Harmonic Distorsion	Upto 10%
Power Factor	0.95 +
Driver Efficiency	Upto 80%

Safety Features

Ingress Protection	IP44
Surge Protection	Upto 2KV
Short Circuit Protection	Yes
Open Circuit Protection	Yes

Environmental Specification

Working Temperature	0 to 40 C
Vibrations	1G

Mechanical Specifications

Luminaire Dimension (L X W X H)	47mm X 20mm
---------------------------------	-------------

HOW TO ORDER

HUB - TRAJEVO - 3W/F - WH - 6050K

Input Power	1	Housing Colour	2
1W/F : 1W/F		GR : Grey	
3W/F : 3W/F		WH : White	
		BL : Black	

Colour Temperature (CCT)	3
2732K : 2700K - 3200K	
4050K : 4000K - 5000K	
6050K : 6000K - 6500K	

How to order example

To order a Hublit products, you can choose an Input Power from the values above from the minimum value to the maximum value, in this case we use smallest value. Similarly you can choose from the Colour Temperature (CCT) options from 2700K to 6500K and so on to generate the model number; Please find the example of a filled model number for this product.

Example : HUB - TRAJEVO - 3W/F - WH - 6050K



Travail LED Wall Washer Lights

General Specifications

Mounting Type	Surface
Limited Warranty	2 Years
Lighting Source Type	SMD LED

Fixture Specifications

Housing Material	Extruded Aluminium
Diffuser Material	Polycarbonate
Surface Finish	Anodised
Driver Type	External

Performance Specifications

Colour rendering index (CRI)	80+
Start up time	Instant
Efficacy (Lm / W)	100+

Electrical Specifications

Input Voltage (VAC)	150 - 270 VAC
Total Harmonic Distorsion	Upto 10%
Power Factor	0.95 +
Driver Efficiency	Upto 80%

Safety Features

Ingress Protection	IP44
Surge Protection	Upto 2KV
Short Circuit Protection	Yes
Open Circuit Protection	Yes

Environmental Specification

Working Temperature	0 to 40 C
Vibrations	1G

Mechanical Specifications

Luminaire Dimension (L X W X H)	32mm X 13mm
---------------------------------	-------------

HOW TO ORDER

HUB - TRAVAIT - 1W/F - GR - 4050K

Input Power	1	Housing Colour	2
1W/F : 1W/F		GR : Grey	
3W/F : 3W/F		WH : White	
		BL : Black	

Colour Temperature (CCT)	3
2732K : 2700K - 3200K	
4050K : 4000K - 5000K	
6050K : 6000K - 6500K	

How to order example

To order a Hublit products, you can choose an Input Power from the values above from the minimum value to the maximum value, in this case we use smallest value. Similarly you can choose from the Colour Temperature (CCT) options from 2700K to 6500K and so on to generate the model number; Please find the example of a filled model number for this product.

Example : HUB - TRAVAIT - 1W/F - GR - 4050K

